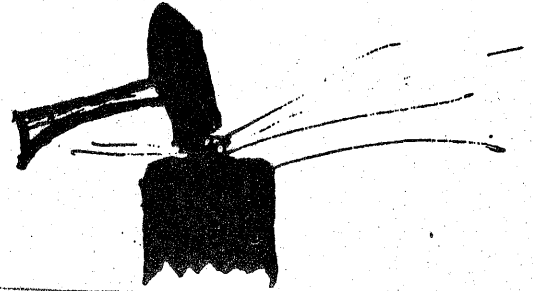


BLACKSMITH ASSOCIATION OF MISSOURI



Volume 1, No. 2

THE ANVIL'S THUD

FEBRUARY NEWS LETTER

FEBRUARY MEETING

OFFICERS

Bob Patrick
President
Box 205
Bethel, MO 63434
Phone: 816/284-6687

Don Asbee
Vice-President
Rt. 2, Hwy 28
Bland, MO 65014
Phone: 314/646-3657

Steve Austin
Secretary-Treasurer
44 N.E. Munger Road
Claycomo, MO 64119
Phone: 816/781-1512

Editor: Bob Patrick

PLACE: DON ASBEE, BLACKSMITH, INC.
Rt. 2, Hwy 28
Bland, Missouri
Phone: 314/646-3657

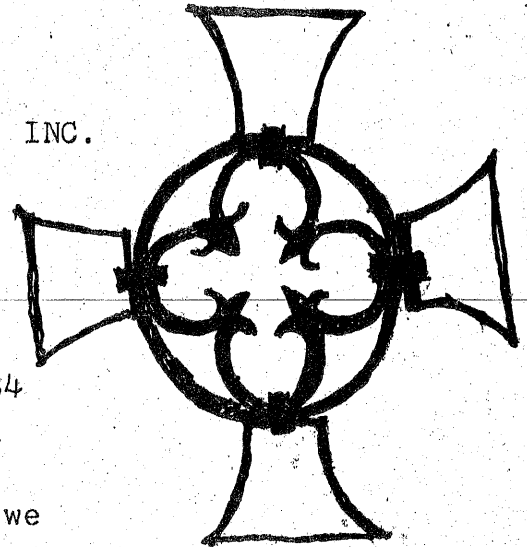
See included map for
directions.

DATE: Saturday, March 3, 1984

Time: Will start about 10AM

Program: February meeting, and we
will see the jigs and
techniques that Don uses.

Don is an expert mig welder and will be glad
to explain mig welding and its advantages to
anyone who is interested. Don specializes
in custom made wood stoves. He is a perfec-
tionist in his work and a fine artist. Bring
a fire poker for an exchange. There will be
a \$5 fee which will also buy a raffle chance
for a poker. \$ will pay for the meeting and
any extra will go into the treasury.



JANUARY MEETING

The January meeting was held at Austin's Iron Works in Claycomo, near
Kansas City. The use of the power hammer was explained and demonstrated
and there was also some other forging done. Everyone got a good look at
Austin Iron Work's fine facilities and some of the excellent work done
there. We got on television and in the newspapers. Bob Patrick and Steve
Austin were the principle demonstrators on the power hammer,
Bob showing how to make some of the basic tools and jigs used under the
hammer, and Steve showing the jigs and tools he uses in his work.

JANUARY MEETING CONTINUED

Manuel Calderone, a lifetime blacksmith, explained about the use of the trip hammer and also about his training as a blacksmith. Dan Siglar demonstrated making a hand adz with a mild steel body and a forge-welded tool steel edge. The day was too short, and shortly after 4 PM we had our Business meeting. We talked about having a fee to pay expenses for each meeting, and decided to combine it with a raffle for an item donated for the raffle. We also decided that it would be good to start an exchange between members of a specific item so that we can get a personal collection of member's work. An item to be traded will be announced before each meeting, and members attending the meeting are asked to bring one of the announced items so that it can be exchanged. There was interest in bulk purchases of coal. Details still have to be worked out, but if members are willing to purchase a definite amount of coal we can arrange a bulk order of top quality coal and divide the coal up without paying a coal dealer for coal that is not so good. We need members to volunteer meetings in their area for months after April. At the present time the main area we need a meeting in is the St. Louis area or nearby. We need to have meetings in all areas of the state so that members can participate without having to travel hundreds of miles. Doug Hendrickson said that we can get a silkscreen made up with our logo professionally for \$17 or so and that we then can print up our own T-Shirts. Any artistically minded individuals are asked to submit designs to Bob Patrick and they will be discussed at a future meeting. The use of old designs was suggested by Steve Austin who said he had some that he thought would be appropriate. We talked about getting some professional photos of member's work so that we could get a slide show to present to architects, interior designers and interested people. It was decided to get in touch with the American Institute of Architects and the American Society of Interior Designers in the Kansas City area and St. Louis area and to talk to them about having them speak to our members and to give a presentation to them of national and member's work as well as international work in order to educate them about what is possible in metal and who can do it on a local level. It was decided to gear a lot of our focus as an organization towards people who smith as a hobby rather than just those engaged in metalworking for a living as hobbyists make up most of our organization. We decided to start looking into grants and Doug Hendrickson has experience in getting grants. He has agreed to help us work up some grant proposals. We need ideas on what kind of grant proposals we want. The meeting was adjourned.

AFTER THE MEETING-----THE TABLET DANCERS

After the meeting there was a party at Steve Austin's and Terry's house. It started out pretty sanely with a little recorded music, a little live music, and a little beer. Then Doug Hendrickson started a new dance called the tablet dance that defys explanation. Our Vice-President, Don Asbee showed he too could do the tablet dance. A non-member Richard Keith was declared to be BAM mascot and to let his head be used as the official anvil. I was sworn to put the Anvil's Thud on this newsletter. The party went on, and all I can say is: don't miss the next party, and, yes, we really are crazy.

50 MEMBERS

As of this writing we have almost exactly 50 members. After our meeting at Culver Stockton College in November we only had 20 members. Quite an increase!

FRANCIS WHITAKER
2 Day Workshop, April 25th and 26th

BAM is fortunate to have as it's first guest demonstrator, Francis Whitaker. If there is one demonstrator blacksmiths say is the best they have ever seen demonstrate, it is usually Francis Whitaker. In the past few years Francis has devoted himself to teaching as much of what he knows to as many aspiring blacksmiths as possible. Recently he has been trying to do intensive workshops with small numbers of smiths of advanced skill, but he has consented to do a workshop demonstrating begining and advanced techniques to help our young organization. There will be more on this in the next newsletter and the April newsletter. One thing is for certain: Francis puts out an incredible amount of work and demonstration in a short time, and he starts early in the day and works all day long. He will use a striker to assist him, and train us in proper striking techniques. This is a chance to learn from a Master. Don't miss it!

MISSING MEMBERS

I have incomplete addresses on several members. In a small town your newsletter may be delivered with an incomplete address, but if you live in a city the newsletter is returned to me with the postage lost as well. It is also possible that there may be some confusion with people who may have paid dues but not been registered properly. If you are in this category or know anyone who is, please get in touch with me in Bethel. Names we need addresses for: Monte Havens, Hamilton, Ill
Bill Printy, Keokuk, Iowa
Julius Enke, St. Louis, MO

If you send me your registration or attend a meeting and pay dues, please make sure we get your complete address and phone number. Don't forget your area code and zip code. If there is a mistake on your address but you recieve your newsletter, please let me know so that I can correct it.

SPECIFIC INFORMATION

Richard Smith of Springfield, MO is interested in ferrous and nonferrous metal lamination. He also wants more technical information included in the newsletter. I will include as much as I can, but I am editor of this newsletter of a non-profit group. I have experience as a metalsmith, but I do not present myself as a technical expert in all areas. One of the purposes of forming BAM is to promote personal contact among members. It is possible to read books and misunderstand a great deal. There are typographical errors, and opinions of why something works are not always correct. But if you see something work and talk to the person who is doing it you may just be able to be able to learn to do it. Plus it may explain your reading. If you have any technical advice for this newsletter, please make sure it is understandable by a layman and if illustrated please make the illustrations clear and simple.

MEETING RAFFELS

In order to generate money to pay expenses for our monthly meetings so that the host will not have to spend money it has been decided to ask all members attending meetings to participate in a raffle to be held at each meeting. The February meeting will have a raffle of a pair of new tongs. It is asked that everyone buy a chance at \$5. This is not mandatory. If you are too short of cash to participate, come anyway. Only those partic-

4

ipating will have a chance at the raffle. The item raffled is to be donated by a member or will be a demonstration item made at the meeting.

EXCHANGES AT MEETINGS

It was suggested and adopted at the January meeting that we each bring a specific item to each meeting, number each item and draw numbers to decide who gets which item. This will enable us to each start a collection of members work. The items will be simple, and participation is voluntary. The item for the February meeting at Don Asbee's is a fire poker.

BRING YOUR FORGES !!!

Weather permitting bring your forge and anvil to Don Asbee's and we will have a forge-in. We will have a further discussion on bulk orders of smithing coal. If you have a source of what you consider particular; y good coal, bring a sample ~~xx~~ so we can try it out. If we can get sufficient participation we can purchase a bulk order of good coal from anywhere in the country at a reasonable rate.

TWO SIMPLE FORGES THAT WORK

If you have a forge that doesn't work very well or don't have one at all there is no necessity to spend a lot of money on one. A good commercial firepot is nice, but they can be expensive. There are a few simple principles in building forges, and I will list these as I show how to build these forges.

1.) KEEP IT SIMPLE. More people have had problems with their forges because they decided to "improve" upon forge design when they had only a short amount of experience blacksmithing.

2.) MAKE IT EASY TO BUILD YOURSELF. I you decide to build a forge from materials that you have to spend a lot of \$ for and use tools you don't have free and easy access too you will spend a lot of money and time for something you could have had inexpensively.

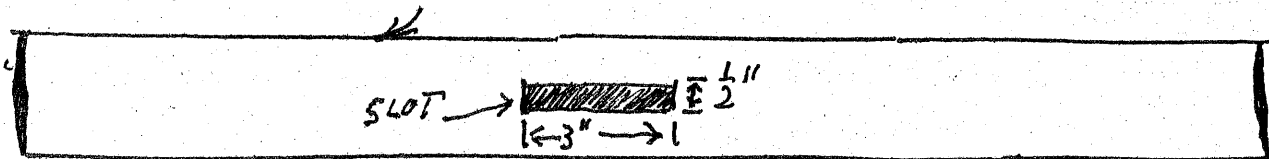
3.) MINIMIZE AIR LEAKS. The major problem with old forges and home-made forges is air leaks. If it can't get into the fire it won't make the fire burn hot.

4.) HAVE A GOOD AIR SUPPLY YOU CAN CONTROL. It doesn't matter if it is a bellows, hand cranked blower, gasoline powered, electric, or a thousand cammels trained to breath in unison. I learned most of what I know using an old wood and leather bellows, but now I use an old vacuum cleaner with a light dimmer switch. Both can get the fire equally hot. Air supply has to be adequate, but able to be shut down. If you get a hand blower try and get a large one if you intend to heat large work. (Cammels eat a lot)

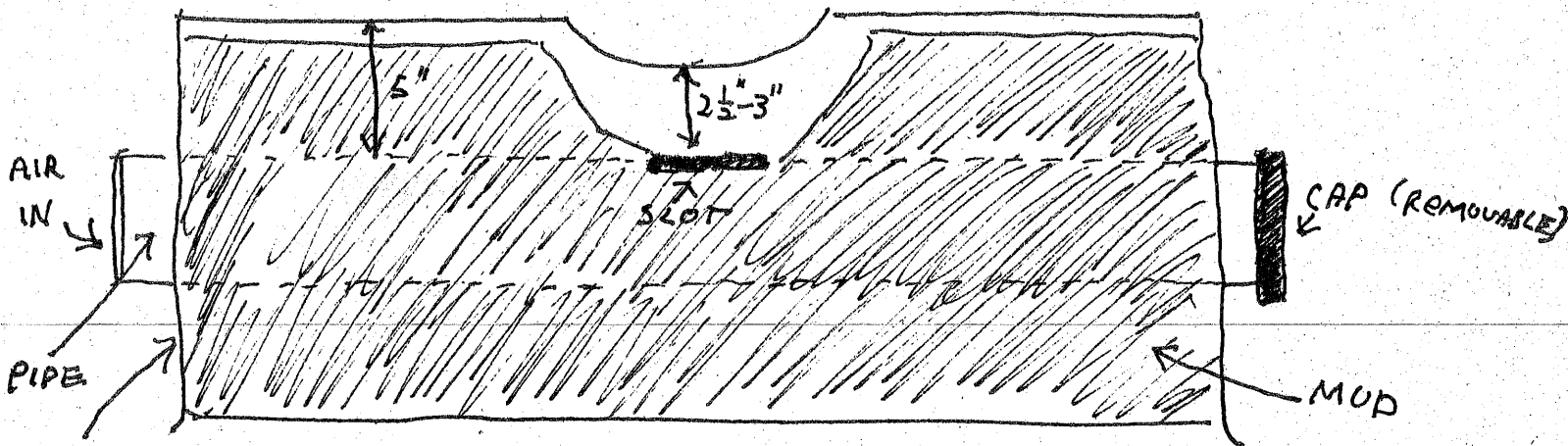
5.) KEEP THE AIR INLET COOL. Clinker sticks to hot metal and shuts the air off.

TOP VIEW

HEAVY WALL 3" OR LARGER PIPE



SIDE VIEW

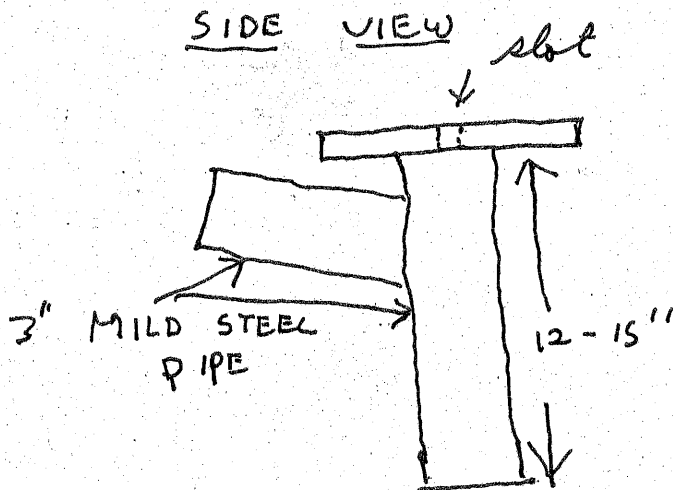
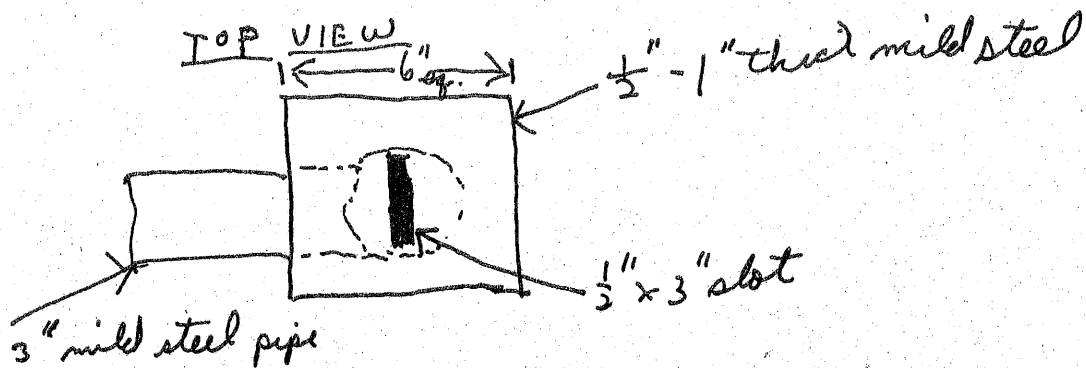


SECTION OF 55 GALLON DRUM

This forge is very simple. It consists of a section of heavy 3" or larger pipe. Any size up to about 6" is fine, the larger and heavier the better. A slot $\frac{1}{2}$ " wide and 3" long is cut with a torch or made by drilling a series of $\frac{1}{2}$ " holes close together and knocking out the webs with a cold chisel. One end of the pipe is fitted with an air tight cap or plug that is removeable. The other end will be hooked up to the air. The body of the forge can be a metal or wood box, part of a 55 gallon drum, stone, or brick. The top of the slot should be set $2\frac{1}{2}$ "-3" below the place the metal will be heated. If the body of the forge is wood, make sure there is 3'4" below the pipe for insulation. The body is filled with sifted dirt, dug below the top soil. It should not have any rocks in it. The dirt is mixed with a small amount of water, but should not be sticky. The box is filled with this, and it is tamped firmly. The area around the slot should be filled with somewhat damper dirt of a claylike consistancy. It can also be filled with a mixture of 50% sand or grog and 50% fireclay. This is molded into a shallow bowl around the slot, leaving the top 1/3 of the pipe exposed. The air supply should be hooked up and a fire started immediately. This will cause the water in the mud to vent as steam and will keep the firepot

from cracking badly. It is best to start the fire with paper, put on wood split up finely, and then add coal gradually. Don't dig in the fire at all. After the fire has burned for an hour or so the firepot will be burned quite hard and is ready for steady use. To clean out the forge remove the end plug or cap and blow out the accumulated ashes and coke. A poker will help loosen the ashes and make this easier. A large pipe makes cleanouts less frequent. When the firepot needs repair simply repair with some more mud and go about your business. Because hot clinker sticks to the mud or to any other ceramic or stone, mud seems to last as well as anything else, and the price is right.

Type 2 forge



This forge requires welding for easiest construction. It also can be riveted if you are industrious, and any cracks filled with furnace cement. a cap or sliding door should be fitted at the bottom of the 12"- 15" pipe. It should be easy to open, and seal well. It is set similar to for Type 1, about 3" below the top of the forge. It is good for a permanent installation and heavy use. About a 4 inch circle at the slot should be left free from mud and a shallow bowl formed to the top of the forge. This forge will equal the best commercial unit in performance, and you can reshape the bowl for experimentation and for special work.

7

Either of these firepots can be fitted into a wheel rim, a 15" usually works well, and used for a portable forge. Legs can be attached by welding or made detachable. Mud is then used to make the proper shape of bowl. My apprentice, Grady Holley, will have one of these at our next meeting, March 3.

WANTED AND FOR SALE

Wanted: Inexpensive or borrowed mimeograph to do this newsletter.
Contact: Bob Patrick, Big Anvil Forge, Bethel, MO 63434
Phone: 816-284-6610 day or 816-284-6687 night.

For Sale: Blacksmith tongs 14-18 inch \$8.00 per pair plus shipping, or will deliver to meetings. These are high quality forged tongs. Special designs and larger sizes more. Contact: Bob Patrick, Big Anvil Forge, Bethel, MO 63434.

A REMARKABLE MAN !!!

One of our members, Dave Gingery, has written a series of books on casting aluminum and building your own precision machine tools. I have purchased 2 of these books and read 2 others, and they are fantastic. I am building a 7 inch metal lathe at present from one of the books. Dave has consented to let one of our members with a tax number sell the books and donate the profits to BAM. These books show how to start with an electric drill, simple hand tools, and build a charcoal foundry, metal lathe, drill press, milling machine, lathe accessories, sheet metal brake, and electric furnace for melting metal. I don't believe there are any other books on basic tool building like them anywhere, and they are reasonable in price. While not blacksmithing, they complement it, and as they all tie together, I personally plan on getting them all as a reference, and hope to squeeze out the time to build everything. The cost to build the tools is minimal, but they do take a lot of time. Most of his techniques were forgotten after the first precision tools were built and could duplicate each other. Dave has agreed to do a workshop for any interested members. Also, you can see my lathe, hopefully completed, at the March meeting (end of March) at my shop. The knowlege is more important than the tools!

ANVIL REPAIRS

If your anvil has part of the side broken off, do not dispair, it can be succesfully repaired quite easily if you have access to an arc welder. Use impact hardening hard surface rod with a low amperage setting. Make a pass, clean it up, let the anvil cool till you can touch it, make another pass, ect. This is only good for small build up. Any finishing should be done with a sander-grinder or surface grinding. I have repaired and restored quite a few anvils using this method. Don Asbee actually built his own anvil! and not a little one made of railroad rail either. Any one who needs a lot of repair on their anvil should talk to me or Don at a meeting. It is not cost effective to pay someone else to do it. Learn yourself!

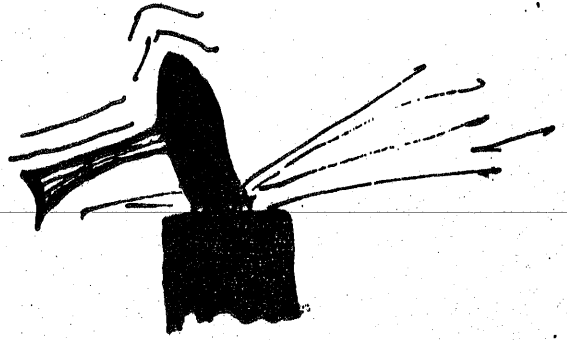
MEMBERSHIP LIST

The following names are the current BAM members that I have listed in our files. I will add new members as they join. Contact each other to pool rides to meetings and save money. Get together locally and work. Get ideas together and send them to me!

MEMBERSHIP LIST

Betsy Perry, Box 47, RR1, Camp Point, Ill 62320 PH 217-593-6569
Stanley Winkler, Rt. 4 Box 343, Perryville, MO 63775 PH 314-883-2887
Tom Clark, SR.R. 287, Box 5780, Potosi, MO 63775 PH 314-438-4725
Robert K. Baker, 401, Catherine St., Monroe City, MO 63456 PH 314-735-2758
Steven E. Baker, 401 Catherine St., Monroe City, MO 63456 PH 314-2758
David Lindaman, Independent Machine, Rt. 2, Box 15, Sulivan, MO 63089
PH 468-6289
Bernard Tappel, Rt.1, Box 81, Henley, MO 65040 PH 496-3793
Robert D. Elkow, 8 Silver ln., St. Louis, MO 63122 PH 965-1925
Jerry Jansen, Rt. 1, Box 216, Caper Girardeau, MO 63701
Dan A. Siglar, 315 S. Lawn, Kansas City, MO 64124 PH 231-6633
Don Asbee, Blacksmith, Inc., Rt. 2, Hwy. 28, Bland, MO 65041 PH 314-646-3657
Jesse Evans, 316 Greely, Webster Groves, MO 63119 PH 968-9020
Gabe Duvernell, 2544 Thunder Rd., High Ridge, MO 63049
Jim Sproles, Tavern Rt., Dixon, MO
Jeff Davis, Rt. 2, Box 198 A, Linn, MO 65150
Lew Shieber, 4043 Cleveland, 2E, St. Louis, MO 63110, PH 314,776 8762
Robert Patrick, Big Anvil Forge, Box 205, Bethel, MO 63434 PH 816-284-6687
Maurice Mesmer, Ewing, MO.
Bill Printy, Keokuk, Iowa
Monte Havens, Hamilton, Ill
Kent Hilgenbrinck, Ursa, Ill
Doug Hendrickson/Bonnie Hendrickson, Peola Valley Forge, RR 1, Box 16D
Lesterville, MO PH 314-637-2576
Melvin T, Shoptaw, 11 S. Dellwood, Dellwood, MO 63135
Julius Enke, St. Louis, MO
Robert J. Candrl, 4424 Rock Creek Rd., High Ridge, MO 63049
Scott Frescoln, Gen. Delivery, Eminence, MO 65466 PH 314-226-5457
314-226-5455
Colin Campbell, Rt. 1, Box 282, Union, MO 63080 PH 583-3512
Richard Ernst, 23 Villa Coublay, St. Louis, MO 63131 PH 314-432-6468
Howard S. Miller, Dept. of History, University of Missouri, St. Louis, MO 63121
PH 314-822-8698
Emil J. Bubash, 3151 Lin-Tel Rd., St. Louis, MO 63125 PH 314-892-4086
Eugene M. Dockins, 10832 Pear Tree Ln, St. Ann, MO 63074 PH 427-2173
Dwain J. Baltz, 15 Wild Deer Lane, St. Peters, MO 63376
Bruce Showalter, 731 S.W. Blvd., Kansas City, KS 66103 PH 362-1783
Jim Foust, 734 S.W. Blvd., Kansas City, KS 66103 236-4444
Bob Foust 734 S.W. Blvd., Kansas City, KS 66103 PH 236-4444
Gerald Brostek, Rt.2, Taneyville, MO 65759 PH 417-546-6151
Richard Smith, 1073 S. Cambell Apt 206, Springfield, MO 65807 PH 417-866-1082
Dave Gingery, 2045 Boonville, Springfield, MO 65803 PH 417-866-7770
Steve Austin, 44 N.E. Munger Rd., Claycomo, MO 64119 PH 816-781-1512
Grady Holley, Sandhill Farm, Rutledge, MO 63563 PH 816-883-5543
Paul Harvey, Route 1, Box 130, Augusta, MO 63332 PH 228-4572
Jerry Hoffman, Rt. 1, Box 189, Lonedell, MO 63060 PH 629-4061
Emil L. Hartman, 5519 E. 12th St., Kansas City, MO 64127 PH 483-4950
Darold A. RineDollar, Blacksmith Shop, P.O. Box 14, Augusta, MO 63332
Donna Lindaman, Independent Machine, Rt. 2, Box 15, Sullivan, MO 63080
Manuel Calderone, 3208 E. 18th St., Kansas City, MO PH 483-6730
George W. Cox Jr., 6612 N.W. Park Plaza Drive, Kansas City, MO 64151
PH 74151

BLACKSMITH ASSOCIATION OF MISSOURI



• Dues are \$10.00 per year. Please make your check payable to the above.

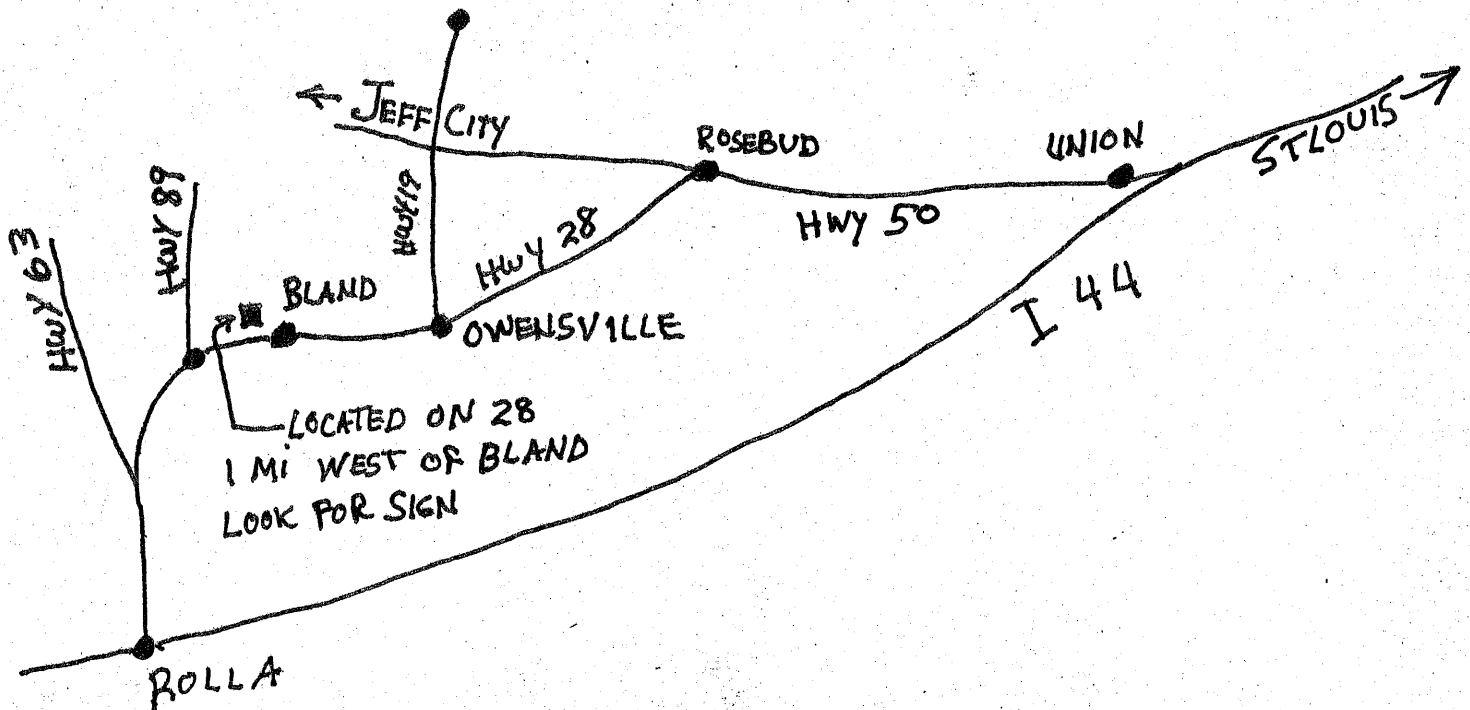
Name: _____ Telephone _____ Date _____

Address: _____ City _____ State _____
Zip _____

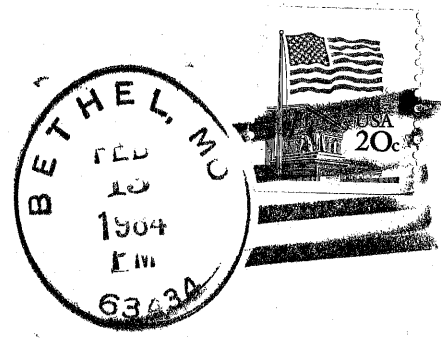
Do you have your own shop? Yes ___ No ___ . Full-time smith: Yes ___ No ___
Do it for a hobby ___ . Interested, but not yet into it ___ .

Suggestions for BAM _____

SEBD TO: BLACKSMITH ASSOCIATION OF MISSOURI
Box 205,
Bethel, MO 63434



B A M **Box 205**
BETHEL, MISSOURI/6343



Lloyd Gastreich
3122 Osceola
St. Louis, Mo, 63111